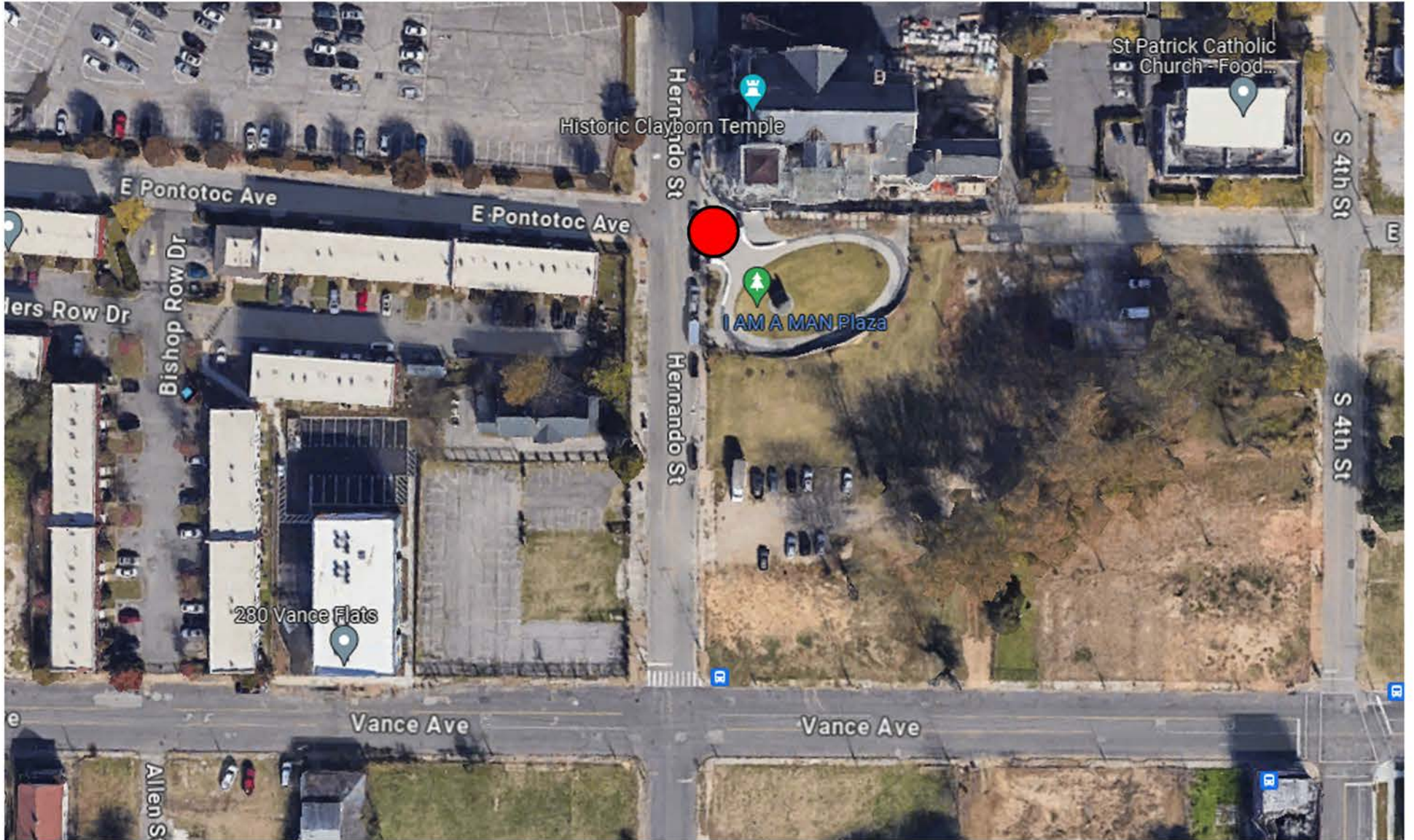


WATER STOP LOCATIONS #1 & #12
321 E. PONTOTOC AVENUE
EAST PONTOTOC AVE & HERNANDO STREET



EMERGENCY CONTACT INFO

**IF THERE IS A LIFE THREATENING EMERGENCY,
CALL 911 IMMEDIATELY!**

**FOR SECURITY OR NON-LIFE THREATENING
EMERGENCIES, CONTACT MIM COMMAND POST
VIA RADIO ON CHANNEL 1**

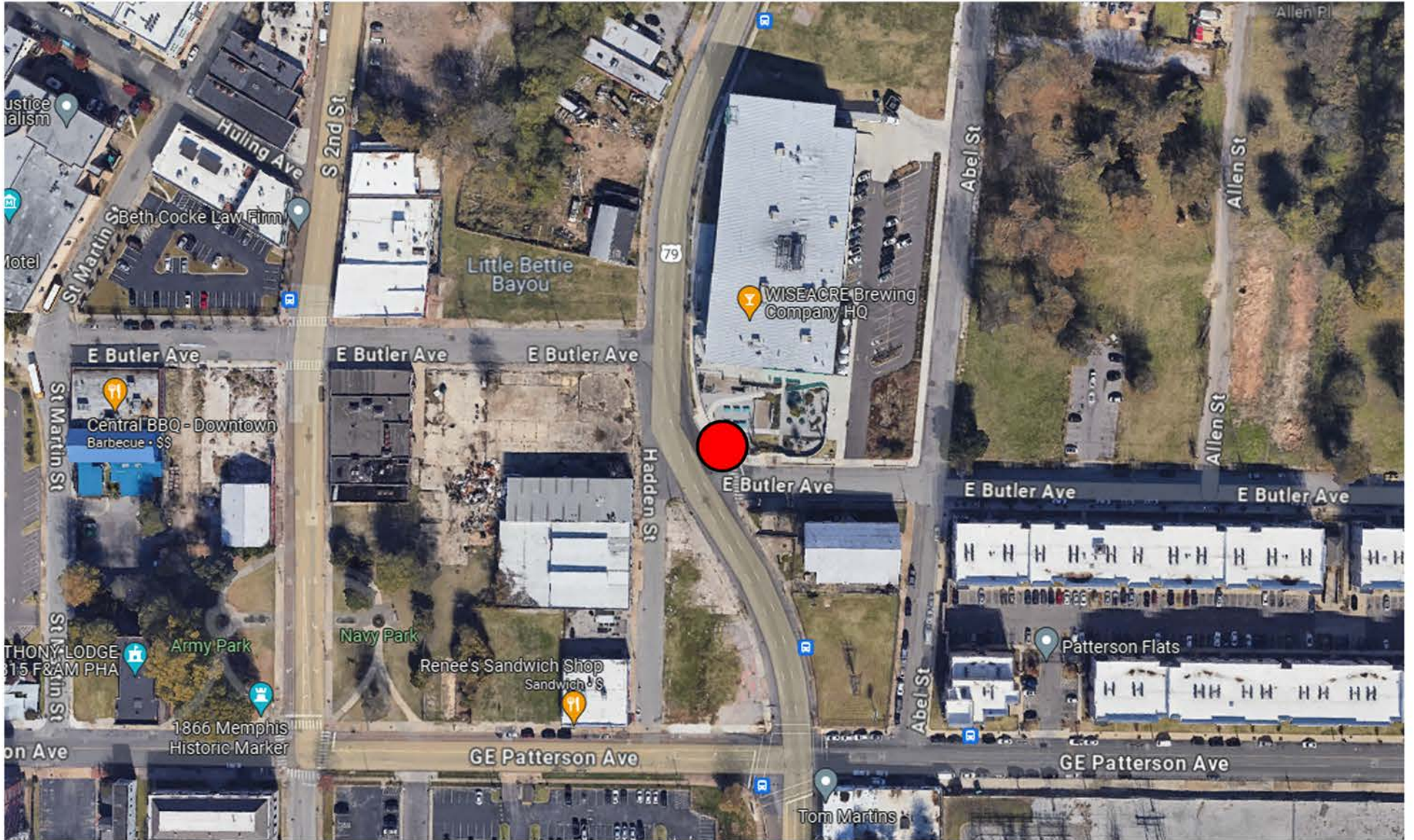
FOR COURSE OPERATIONS ISSUES CONTACT:

ADAM SHELTON: 901-289-3170
OR
FLOYD BENSON: 901-671-5395

WATER STOP LOCATIONS #2 & #11

398 SOUTH BB KING BLVD

SOUTH BB KING @ EAST BUTLER AVENUE



EMERGENCY CONTACT INFO

**IF THERE IS A LIFE THREATENING EMERGENCY,
CALL 911 IMMEDIATELY!**

**FOR SECURITY OR NON-LIFE THREATENING
EMERGENCIES, CONTACT MIM COMMAND POST
VIA RADIO ON CHANNEL 1**

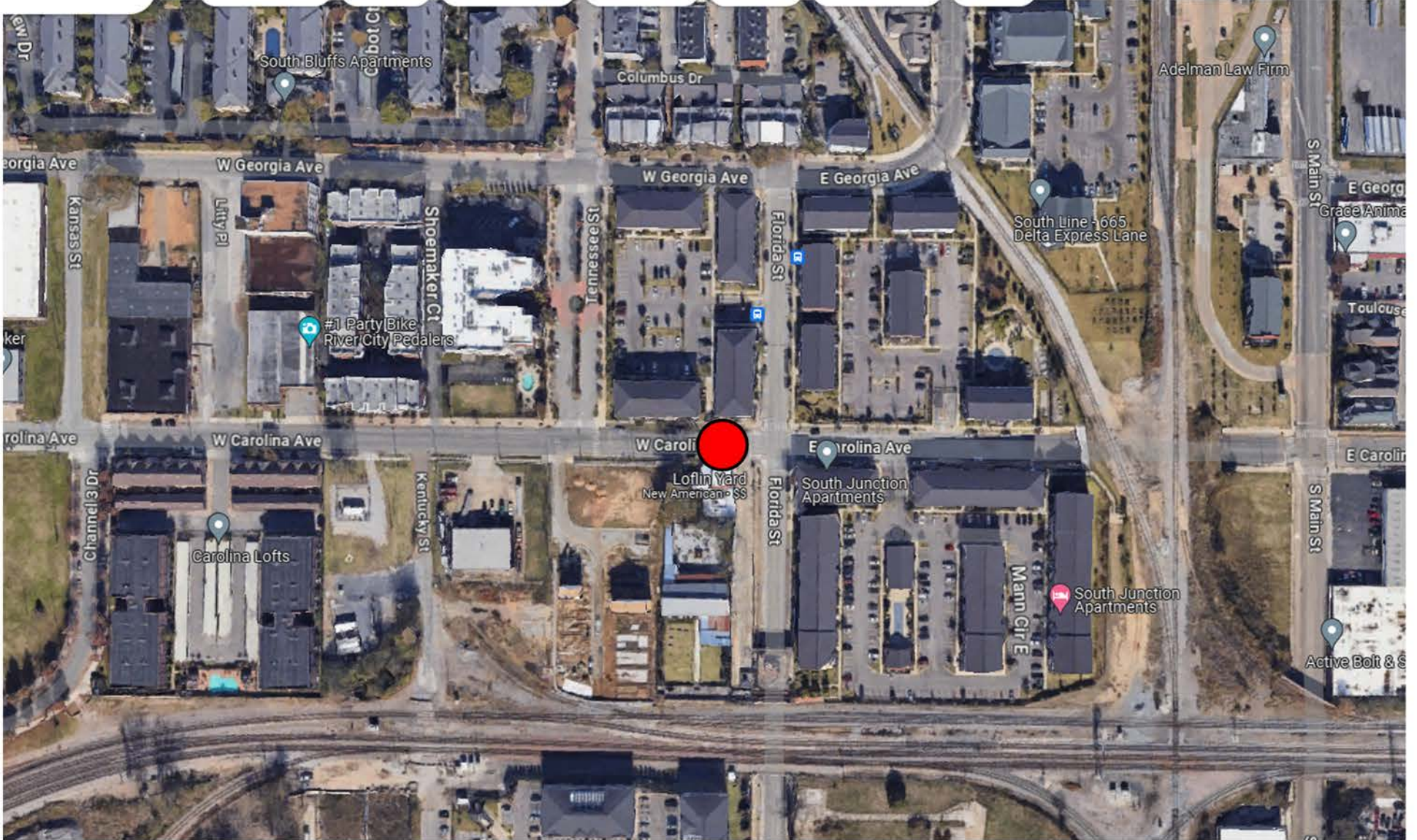
FOR COURSE OPERATIONS ISSUES CONTACT:

ADAM SHELTON: 901-289-3170

OR

FLOYD BENSON: 901-671-5395

WATER STOP LOCATION #3
7 WEST CAROLINA AVENUE
WEST CAROLINA AVENUE @ FLORIDA STREET



EMERGENCY CONTACT INFO

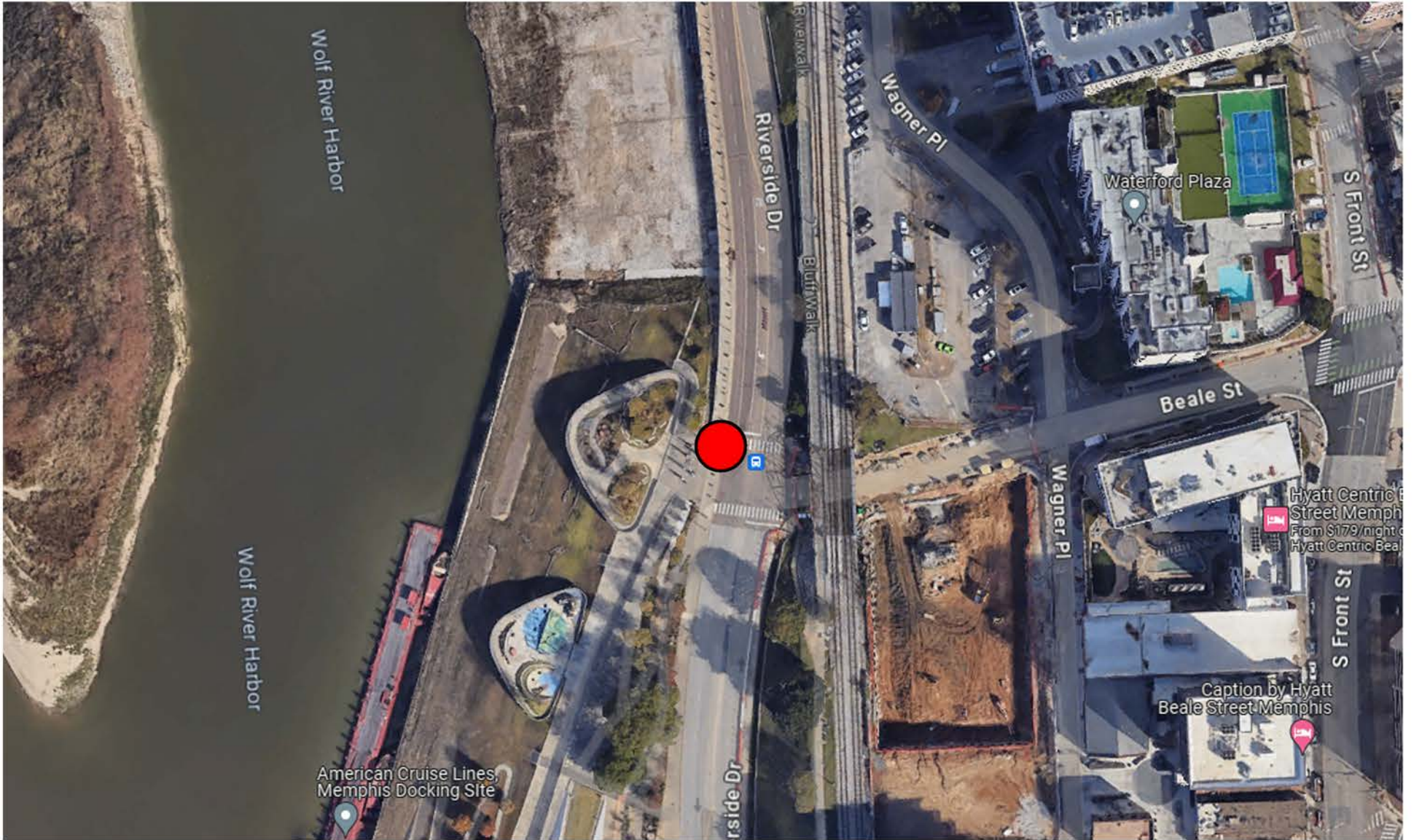
**IF THERE IS A LIFE THREATENING EMERGENCY,
CALL 911 IMMEDIATELY!**

**FOR SECURITY OR NON-LIFE THREATENING
EMERGENCIES, CONTACT MIM COMMAND POST
VIA RADIO ON CHANNEL 1**

FOR COURSE OPERATIONS ISSUES CONTACT:

ADAM SHELTON: 901-289-3170
OR
FLOYD BENSON: 901-671-5395

WATER STOP LOCATION #4
251 RIVERSIDE DRIVE
RIVERSIDE DRIVE @ BEALE STREET



EMERGENCY CONTACT INFO

**IF THERE IS A LIFE THREATENING EMERGENCY,
CALL 911 IMMEDIATELY!**

**FOR SECURITY OR NON-LIFE THREATENING
EMERGENCIES, CONTACT MIM COMMAND POST
VIA RADIO ON CHANNEL 1**

FOR COURSE OPERATIONS ISSUES CONTACT:

ADAM SHELTON: 901-289-3170
OR
FLOYD BENSON: 901-671-5395

**WATER STOP LOCATION #5
497 NORTH FRONT STREET
NORTH FRONT STREET @ SYCAMORE AVENUE**



EMERGENCY CONTACT INFO

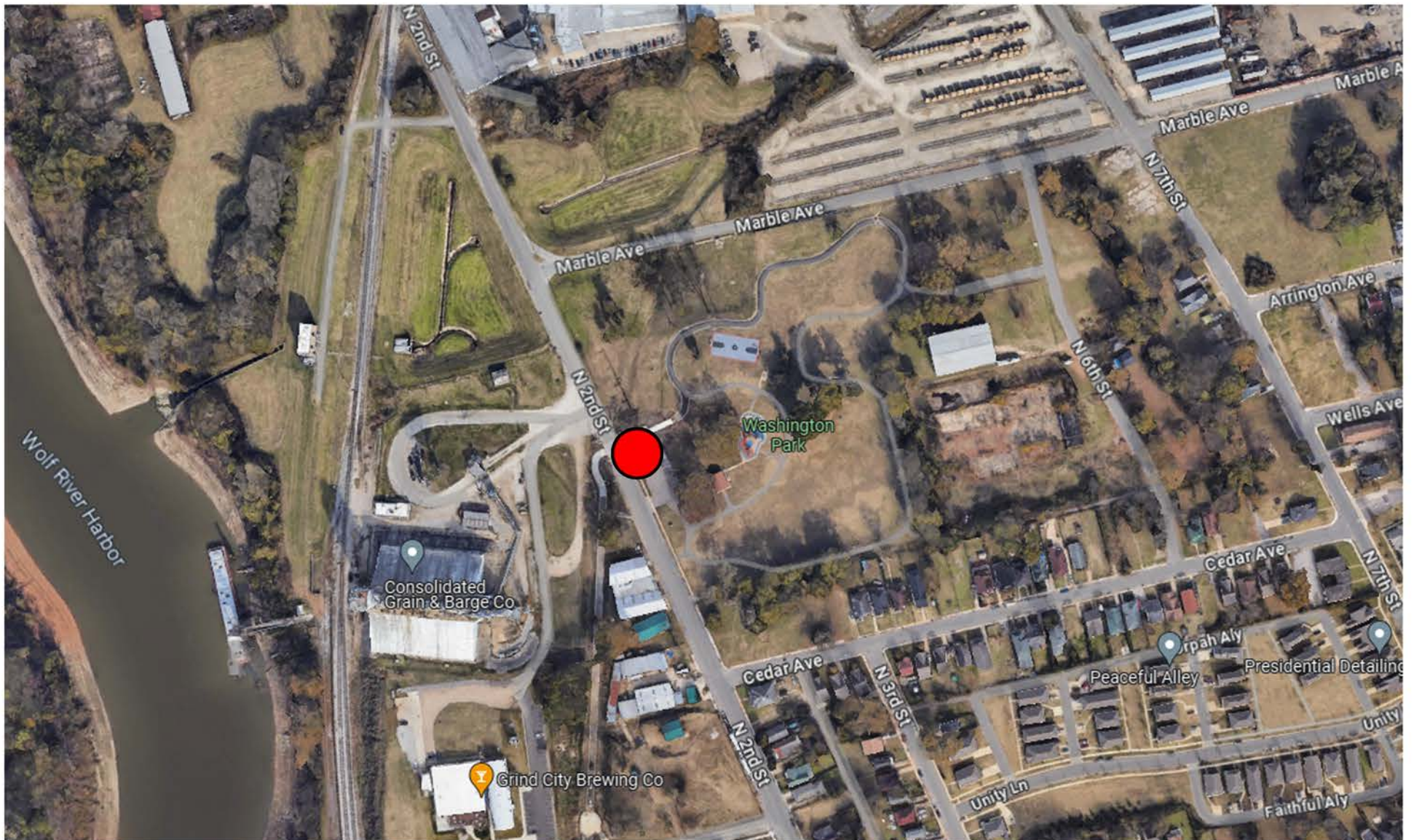
**IF THERE IS A LIFE THREATENING EMERGENCY,
CALL 911 IMMEDIATELY!**

**FOR SECURITY OR NON-LIFE THREATENING
EMERGENCIES, CONTACT MIM COMMAND POST
VIA RADIO ON CHANNEL 1**

FOR COURSE OPERATIONS ISSUES CONTACT:

**ADAM SHELTON: 901-289-3170
OR
FLOYD BENSON: 901-671-5395**

**WATER STOP LOCATION #6
1072 NORTH 2ND STREET
NORTH 2ND STREET @ WASHINGTON PARK**



EMERGENCY CONTACT INFO

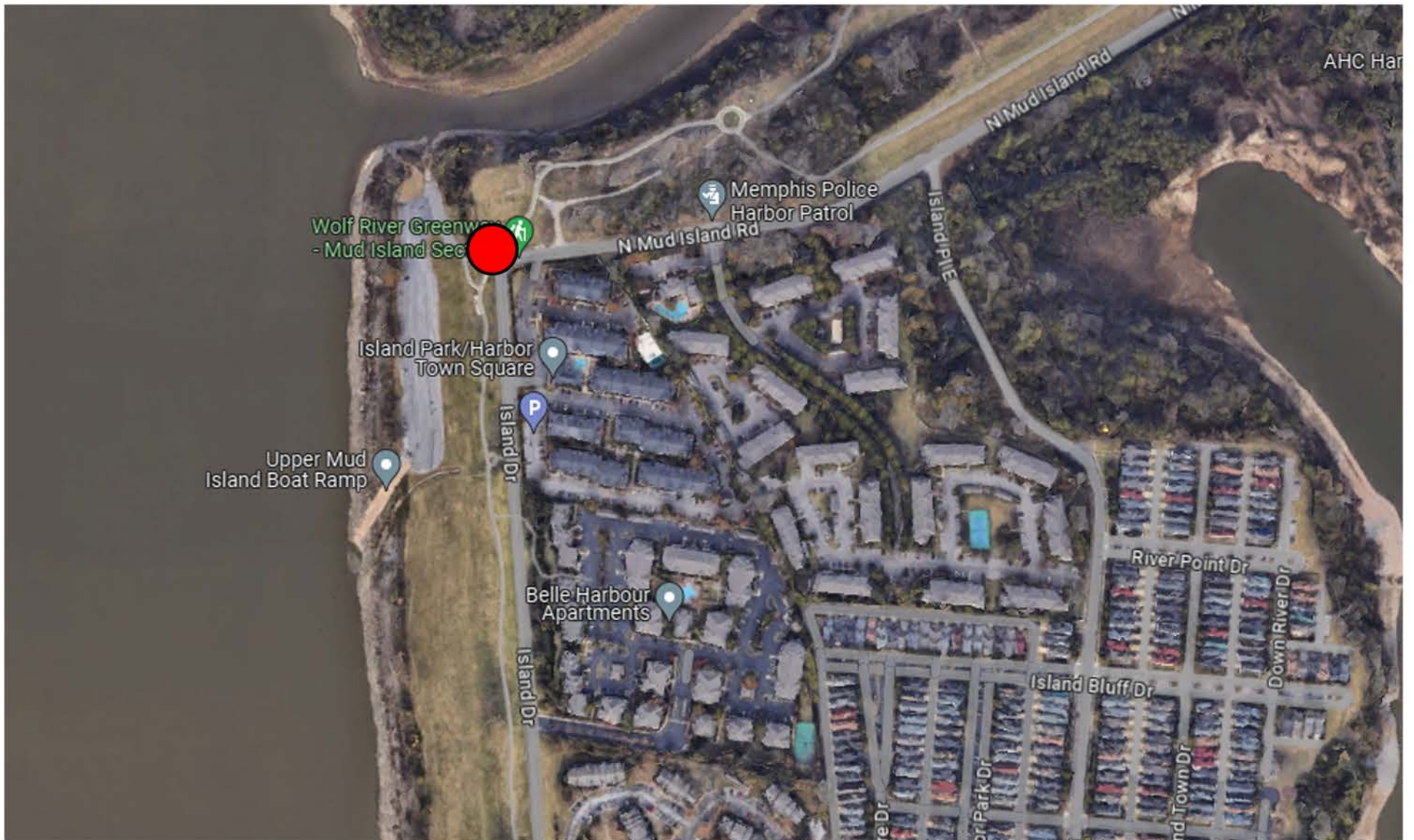
**IF THERE IS A LIFE THREATENING EMERGENCY,
CALL 911 IMMEDIATELY!**

**FOR SECURITY OR NON-LIFE THREATENING
EMERGENCIES, CONTACT MIM COMMAND POST
VIA RADIO ON CHANNEL 1**

FOR COURSE OPERATIONS ISSUES CONTACT:

**ADAM SHELTON: 901-289-3170
OR
FLOYD BENSON: 901-671-5395**

WATER STOP LOCATION #7
1320 NORTH MUD ISLAND ROAD
NORTH MUD ISLAND ROAD @ WOLF RIVER
GREENWAY TRAILHEAD



EMERGENCY CONTACT INFO

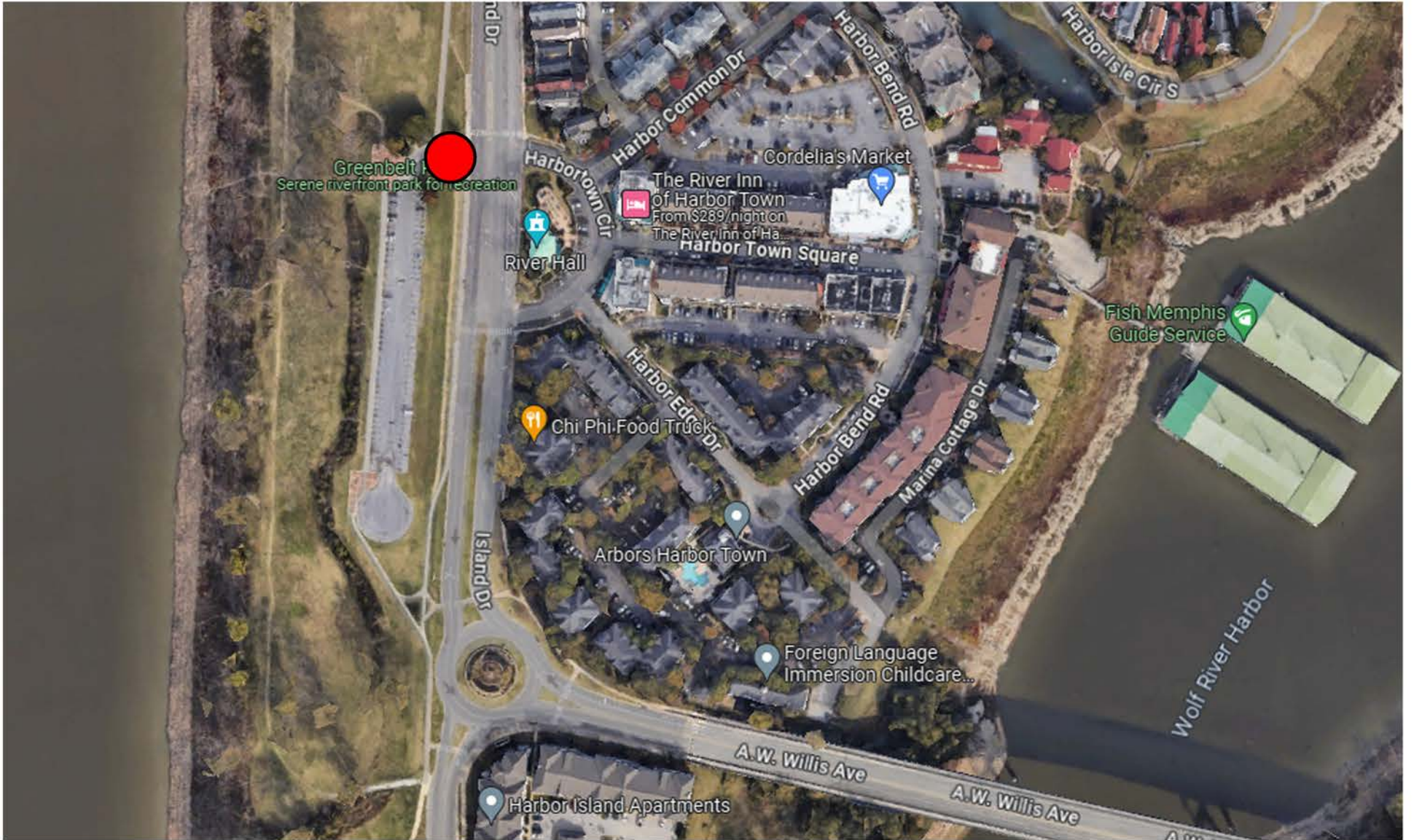
**IF THERE IS A LIFE THREATENING EMERGENCY,
CALL 911 IMMEDIATELY!**

**FOR SECURITY OR NON-LIFE THREATENING
EMERGENCIES, CONTACT MIM COMMAND POST
VIA RADIO ON CHANNEL 1**

FOR COURSE OPERATIONS ISSUES CONTACT:

ADAM SHELTON: 901-289-3170
OR
FLOYD BENSON: 901-671-5395

WATER STOP LOCATION #8
830 ISLAND DRIVE
ISLAND DRIVE @ GREENBELT PARK



EMERGENCY CONTACT INFO

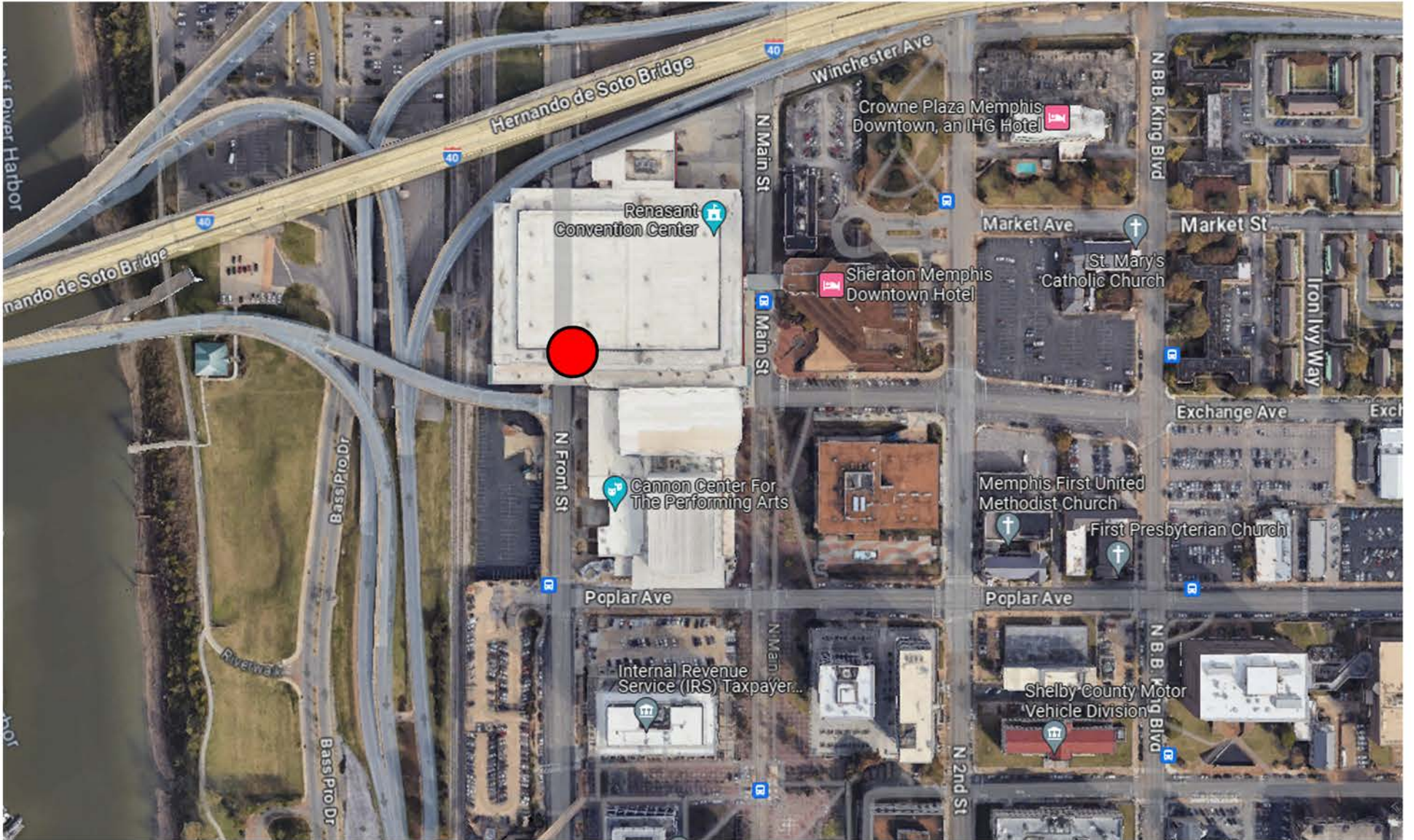
**IF THERE IS A LIFE THREATENING EMERGENCY,
CALL 911 IMMEDIATELY!**

**FOR SECURITY OR NON-LIFE THREATENING
EMERGENCIES, CONTACT MIM COMMAND POST
VIA RADIO ON CHANNEL 1**

FOR COURSE OPERATIONS ISSUES CONTACT:

ADAM SHELTON: 901-289-3170
OR
FLOYD BENSON: 901-671-5395

WATER STOP LOCATION #9
231 NORTH FRONT STREET
NORTH FRONT STREET @ RENASANT
CONVENTION CENTER OVERPASS



EMERGENCY CONTACT INFO

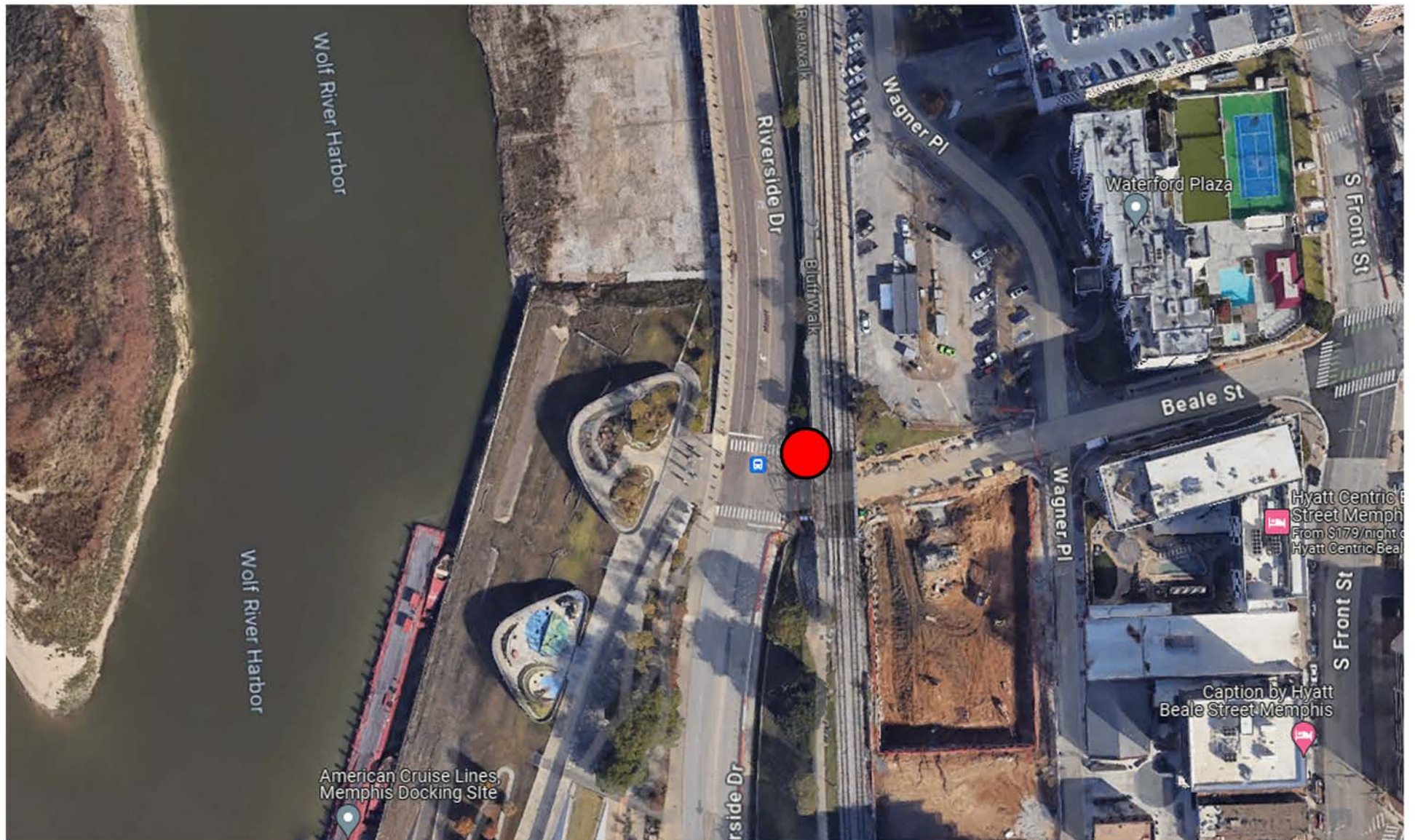
IF THERE IS A LIFE THREATENING EMERGENCY,
CALL 911 IMMEDIATELY!

FOR SECURITY OR NON-LIFE THREATENING
EMERGENCIES, CONTACT MIM COMMAND POST
VIA RADIO ON CHANNEL 1

FOR COURSE OPERATIONS ISSUES CONTACT:

ADAM SHELTON: 901-289-3170
OR
FLOYD BENSON: 901-671-5395

WATER STOP LOCATION #10
251 RIVERSIDE DRIVE
RIVERSIDE DRIVE @ BEALE STREET



EMERGENCY CONTACT INFO

**IF THERE IS A LIFE THREATENING EMERGENCY,
CALL 911 IMMEDIATELY!**

**FOR SECURITY OR NON-LIFE THREATENING
EMERGENCIES, CONTACT MIM COMMAND POST
VIA RADIO ON CHANNEL 1**

FOR COURSE OPERATIONS ISSUES CONTACT:

ADAM SHELTON: 901-289-3170
OR
FLOYD BENSON: 901-671-5395